

SCHEMATIC DIAGRAM

800 Upper Bukit Timah Road, Singapore 678139

BLK 800									
Floor	Unit	1	2	3	4	5	6	7	8
24	B1(d)	C3Pa(d)	D2(d)	C1(d)	B3S(d)	C4PSa(d)	C2(d)	B1a(d)	
23	B1	C3Pa	D2	C1	B3S	C4PSa	C2	B1a	
22	B1	C3Pa	D2	C1	B3S	C4PSa	C2	B1a	
21	B1	C3Pa	D2	C1	B3S	C4PSa	C2	B1a	
20	B1	C3Pa	D2	C1	B3S	C4PSa	C2	B1a	
19	B1	C3Pa	D2	C1	B3S	C4PSa	C2	B1a	
18	B1	C3Pa	D2	C1	B3S	C4PSa	C2	B1a	
17	B1	C3Pa	D2	C1	B3S	C4PSa	C2	B1a	
16	B1	C3Pa	D2	C1	B3S	C4PSa	C2	B1a	
15	B1	C3Pa	D2	C1	B3S	C4PSa	C2	B1a	
14	B1	C3Pa	D2	C1	B3S	C4PSa	C2	B1a	
13	B1	C3Pa	D2	C1	B3S	C4PSa	C2	B1a	
12	B1	C3Pa	D2	C1	B3S	C4PSa	C2	B1a	
11	B1	C3Pa	D2	C1	B3S	C4PSa	C2	B1a	
10	B1	C3Pa	D2	C1	B3S	C4PSa	C2	B1a	
9	B1	C3Pa	D2	C1	B3S	C4PSa	C2	B1a	
8	B1	C3Pa	D2	C1	B3S	C4PSa	C2	B1a	
7	B1	C3Pa	D2	C1	B3S	C4PSa	C2	B1a	
6	B1	C3Pa	D2	C1	B3S	C4PSa	C2	B1a	
5	B1	C3Pa	D2	C1	B3S	C4PSa	C2	B1a	
4	B1	C3Pa	D2	C1	B3S	C4PSa	C2	B1a	
3	B1	C3Pa	D2	C1	B3S	C4PSa	C2	B1a	
2	B1	C3Pa	D2	C1	B3S	C4PSa	C2	B1a	
1	B1(p)	C3Pa(p)	D2(p)	B2(p)	B3S(p)	C4PSa(p)	C2(p)	B1a(p)	

802 Upper Bukit Timah Road, Singapore 678140

BLK 802										
Floor	Unit	9	10	11	12	13	14	15	16	17
24	B1(d)	D2(d)	C4PS(d)	B1(d)	A1Sa(d)	A1S(d)	C3P(d)	E1(d)	B3S(d)	
23	B1	D2	C4PS	B1	A1Sa	A1S	C3P	E1	B3S	
22	B1	D2	C4PS	B1	A1Sa	A1S	C3P	E1	B3S	
21	B1	D2	C4PS	B1	A1Sa	A1S	C3P	E1	B3S	
20	B1	D2	C4PS	B1	A1Sa	A1S	C3P	E1	B3S	
19	B1	D2	C4PS	B1	A1Sa	A1S	C3P	E1	B3S	
18	B1	D2	C4PS	B1	A1Sa	A1S	C3P	E1	B3S	
17	B1	D2	C4PS	B1	A1Sa	A1S	C3P	E1	B3S	
16	B1	D2	C4PS	B1	A1Sa	A1S	C3P	E1	B3S	
15	B1	D2	C4PS	B1	A1Sa	A1S	C3P	E1	B3S	
14	B1	D2	C4PS	B1	A1Sa	A1S	C3P	E1	B3S	
13	B1	D2	C4PS	B1	A1Sa	A1S	C3P	E1	B3S	
12	B1	D2	C4PS	B1	A1Sa	A1S	C3P	E1	B3S	
11	B1	D2	C4PS	B1	A1Sa	A1S	C3P	E1	B3S	
10	B1	D2	C4PS	B1	A1Sa	A1S	C3P	E1	B3S	
9	B1	D2	C4PS	B1	A1Sa	A1S	C3P	E1	B3S	
8	B1	D2	C4PS	B1	A1Sa	A1S	C3P	E1	B3S	
7	B1	D2	C4PS	B1	A1Sa	A1S	C3P	E1	B3S	
6	B1	D2	C4PS	B1	A1Sa	A1S	C3P	E1	B3S	
5	B1	D2	C4PS	B1	A1Sa	A1S	C3P	E1	B3S	
4	B1	D2	C4PS	B1	A1Sa	A1S	C3P	E1	B3S	
3	B1	D2	C4PS	B1	A1Sa	A1S	C3P	E1	B3S	
2	B1	D2	C4PS	B1	A1Sa	A1S	C3P	E1	B3S	
1	B1(p)	D2(p)	C4PS(p)	B1(p)	A1Sa(p)	A1S(p)	C3P(p)	D1(p)	B3S(p)	

Legend

 1-Bedroom + Study	 2-Bedroom	 2-Bedroom + Study	 3-Bedroom
 3-Bedroom Premium	 3-Bedroom Premium + Study	 4-Bedroom	 5-Bedroom

FIND ENDLESS JOY WITHIN A FOREST-INSPIRED LANDSCAPE

SITE PLAN (1st Storey)

ARRIVAL SANCTUARY

- Welcome Boulevard
- Arrival Court
- Sculptural Courtyard
- Grand Plaza
- Grand Drop-off
- Residential Services Counter
- Water Cascades

GRAND SANCTUARY

- Grand Water Courtyard
- Grand Lawn
- Swing Garden
- Serenity Deck
- Serenity Sunken Lounge

GRAND CLUB

- Social Lounge
- Function Room (2nd Storey)
- Outdoor Deck (2nd Storey)

TRANQUIL SANCTUARY

- Forest Lounge
- Tranquil Pavilion
- Relaxation Pavilion
- Jogging Trail
- Tranquil Lawn
- Pets Lawn

LUSH SANCTUARY

- Lush Sunken Lounge
- Jet Pool
- Kids Pool
- Family Pool
- Family Pool Deck
- 50m Infinity Pool
- Gymnasium
- Changing Room
- Relaxation Pool Deck
- Spa Alcove
- Chill-out Lounge

SOCIAL SANCTUARY

- Social Lawn
- BBQ Pavilion
- Sensory Garden
- Wellness Lawn
- Outdoor Fitness
- Spa Alcove
- Lookout Lounge
- Tennis Court (Basement 1)
- Forest Pavilion (2nd Storey)
- Party Pavilion (2nd Storey)
- Social Pavilion (2nd Storey)
- Treetop Walk (2nd Storey)

ANCILLARY

- Guardhouse
- Substation (Basement 1)
- Bin Centre (Basement 1)
- Ventilation Shaft
- Genset
- Entrance to Basement
- Carpark
- Side Gate

[] Water Tank (Roof)



0 5 10 15 20 25m

The renderings of the units as shown are for illustrative purposes only. The shading and outline of the unit type only applies to typical units. The boundary lines of the units set out here are not to be taken as a factual representation of the actual units. Kindly refer to the approved BP plans for the actual unit outline/boundary lines.



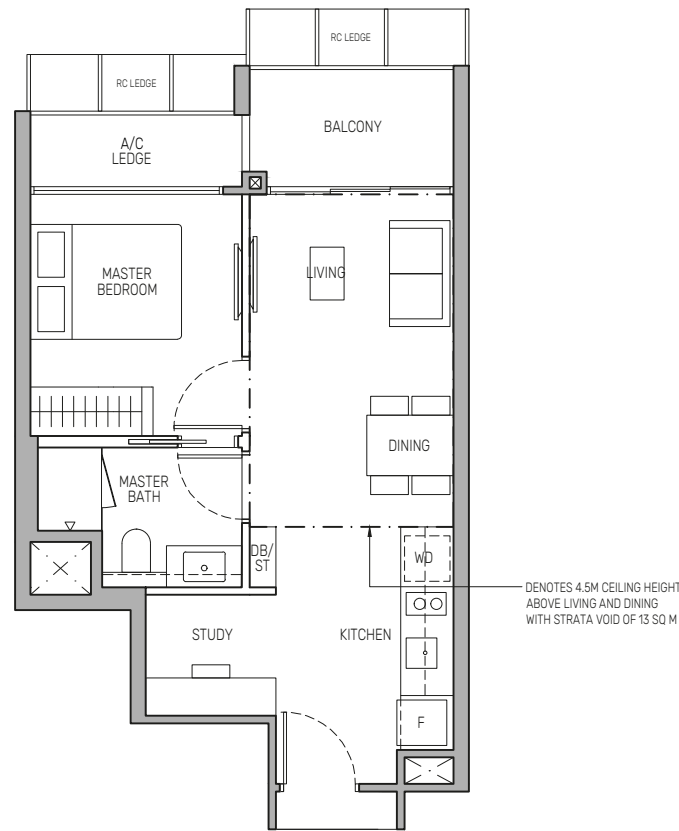
1-BEDROOM + STUDY

Type A1Sa

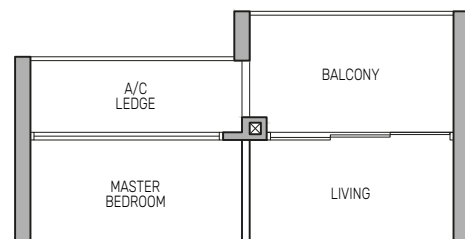
48 sq m / 517 sq ft

BLK 802 : #02-13 to #23-13

APPLICABLE TO
#08-13 to #24-13



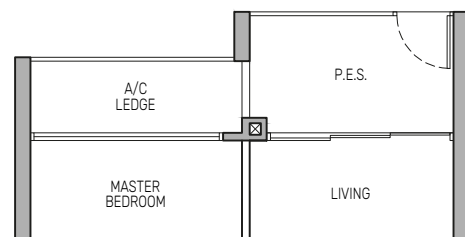
APPLICABLE TO
#02-13 to #07-13



Type A1Sa(p)

48 sq m / 517 sq ft

BLK 802 : #01-13



Type A1Sa(d)

61 sq m / 657 sq ft
(includes 13 sq m of strata void above living and dining with 4.5m ceiling height)

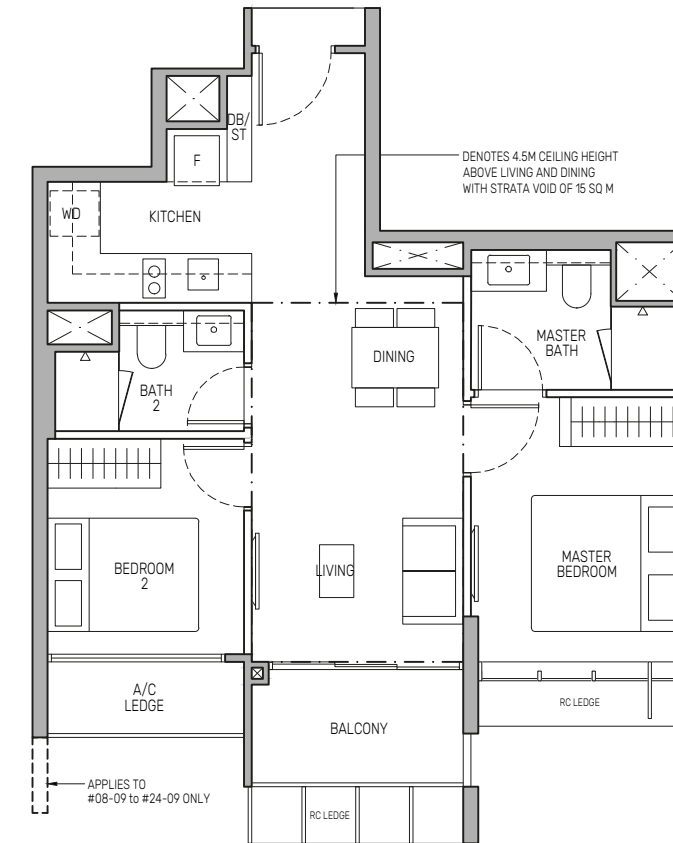
BLK 802 : #24-13

Type B1

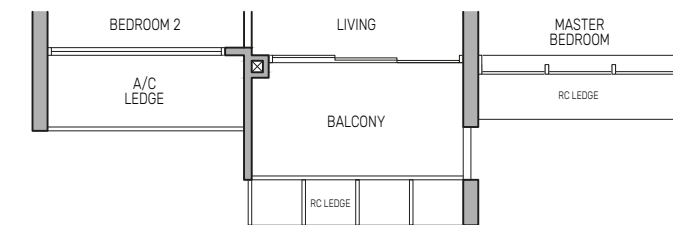
63 sq m / 678 sq ft

BLK 800 : #02-01 to #23-01
BLK 802 : #02-09 to #23-09
BLK 802 : #02-12* to #23-12*

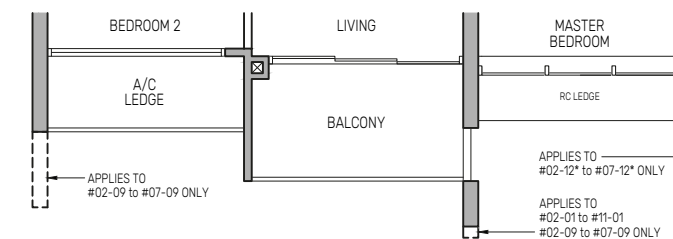
APPLICABLE TO
#12-01 to #24-01
#08-09 to #24-09



APPLICABLE TO
#08-12* to #24-12*



APPLICABLE TO
#02-01 to #11-01
#02-09 to #07-09
#02-12* to #07-12*

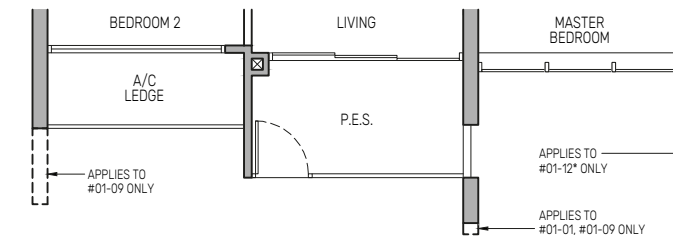


Type B1(p)

63 sq m / 678 sq ft

BLK 800 : #01-01
BLK 802 : #01-09
BLK 802 : #01-12*

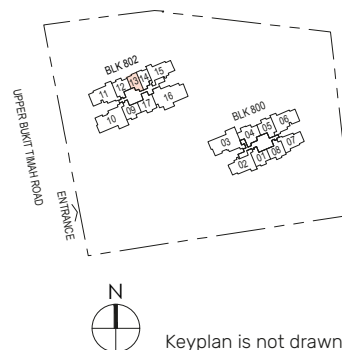
APPLICABLE TO
#01-09 ONLY



Wall not allowed to be hacked or altered
Mirror Image
P.E.S. - Private Enclosed Space
WD - Washer Cum Dryer
WC - Water Closet
HS - Household Shelter
DB/ST - Distribution Board/Storage
RC - Reinforced Concrete
F - Fridge
A/C - Air-Conditioner

0 0.5 1 2 3 5M

Area includes air-conditioner (A/C) ledge, balcony and strata void area where applicable, and excludes among others, the RC - Reinforced Concrete Ledge. The demarcated strata void area is measured mid-wall to mid-wall. The plans are subject to change as may be approved by relevant authorities. All floor plans are approximate measurements only and are subject to final survey. The balcony shall not be enclosed unless with the approved balcony screen, more particularly illustrated under the header "Approved Balcony Screen".



2-BEDROOM

Type B1(d)

78 sq m / 840 sq ft
(includes 15 sq m of strata void above living and dining with 4.5m ceiling height)

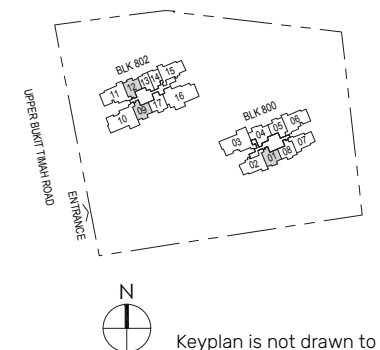
BLK 800 : #24-01
BLK 802 : #24-09
BLK 802 : #24-12*

APPLICABLE TO
#01-01, #01-09 ONLY

Wall not allowed to be hacked or altered
Mirror Image
P.E.S. - Private Enclosed Space
WD - Washer Cum Dryer
WC - Water Closet
HS - Household Shelter
DB/ST - Distribution Board/Storage
RC - Reinforced Concrete
F - Fridge
A/C - Air-Conditioner

0 0.5 1 2 3 5M

Area includes air-conditioner (A/C) ledge, balcony and strata void area where applicable, and excludes among others, the RC - Reinforced Concrete Ledge. The demarcated strata void area is measured mid-wall to mid-wall. The plans are subject to change as may be approved by relevant authorities. All floor plans are approximate measurements only and are subject to final survey. The balcony shall not be enclosed unless with the approved balcony screen, more particularly illustrated under the header "Approved Balcony Screen".

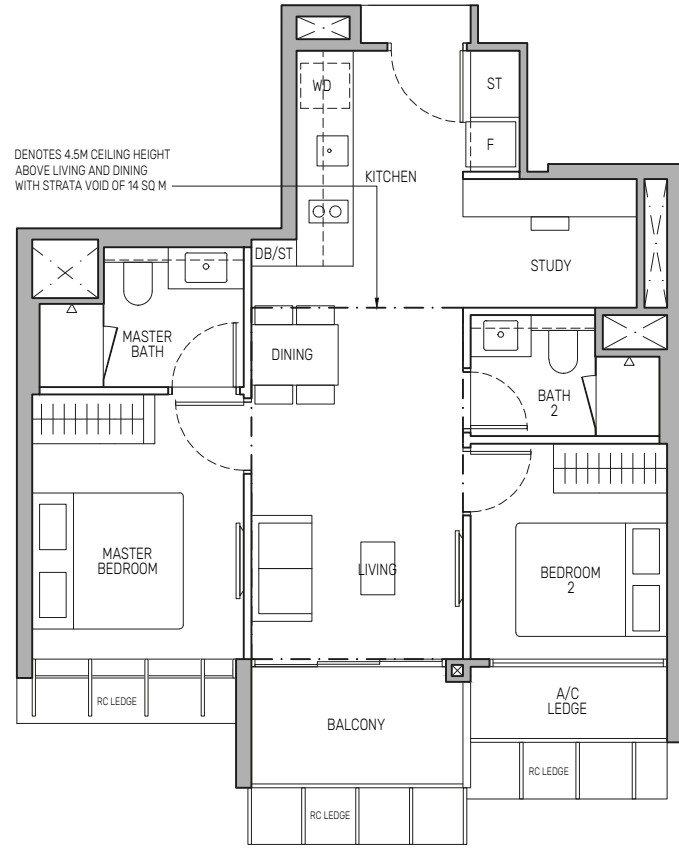


2-BEDROOM + STUDY

Type B3S

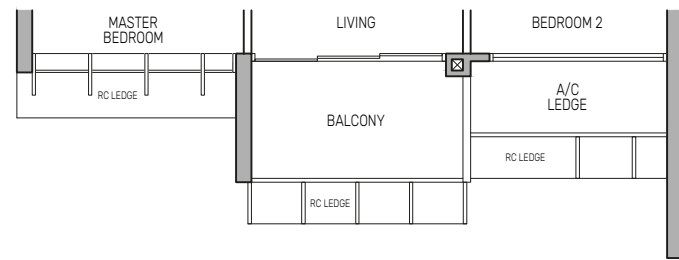
65 sq m / 700 sq ft

BLK 800 : #02-05* to #23-05*
BLK 802 : #02-17 to #23-17

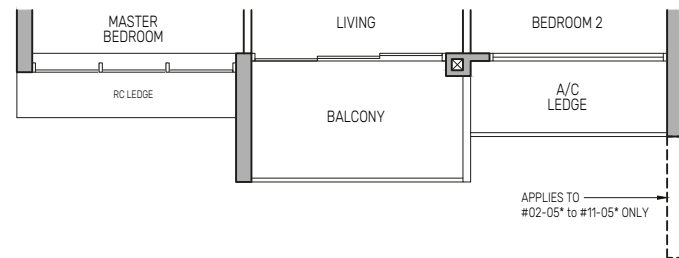


APPLICABLE TO #08-17 to #24-17

APPLICABLE TO #12-05* to #24-05*



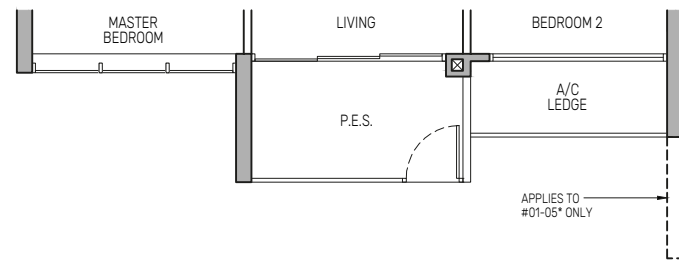
APPLICABLE TO #02-17 to #07-17
#02-05* to #11-05*



Type B3S(p)

65 sq m / 700 sq ft

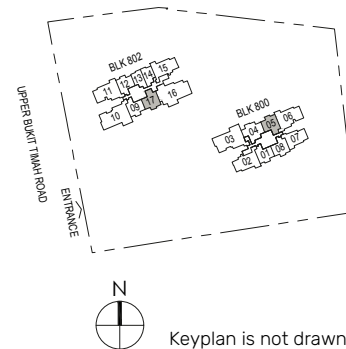
BLK 800 : #01-05*
BLK 802 : #01-17



Wall not allowed to be hacked or altered
Mirror Image
P.E.S. - Private Enclosed Space
WD - Washer Cum Dryer
WC - Water Closet
HS - Household Shelter
DB/ST - Distribution Board/Storage
RC - Reinforced Concrete
F - Fridge
A/C - Air-Conditioner

0 0.5 1 2 3 5M

Area includes air-conditioner (A/C) ledge, balcony and strata void area where applicable, and excludes among others, the RC - Reinforced Concrete Ledge. The demarcated strata void area is measured mid-wall to mid-wall. The plans are subject to change as may be approved by relevant authorities. All floor plans are approximate measurements only and are subject to final survey. The balcony shall not be enclosed unless with the approved balcony screen, more particularly illustrated under the header "Approved Balcony Screen".



Type B3S(d)

79 sq m / 850 sq ft
(includes 14 sq m of strata void above living and dining with 4.5m ceiling height)

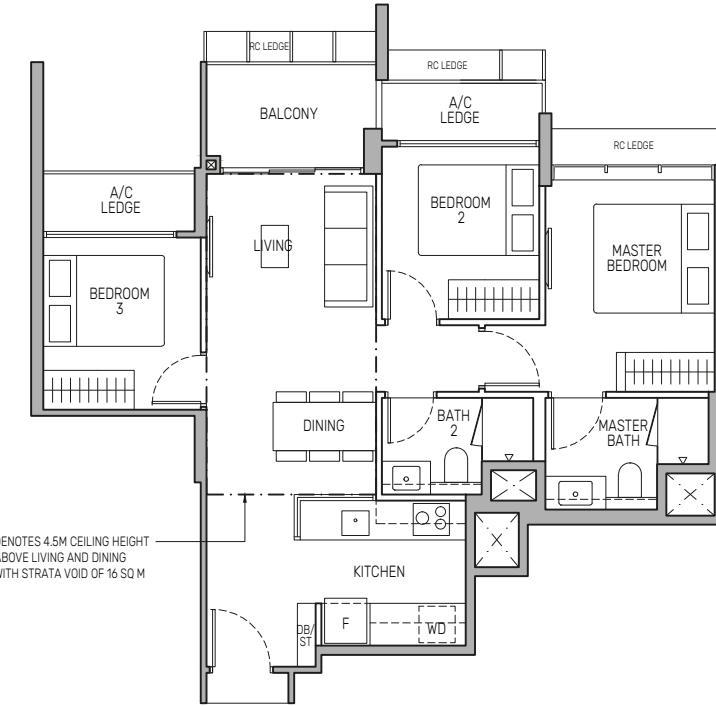
BLK 800 : #24-05*
BLK 802 : #24-17

Type C1

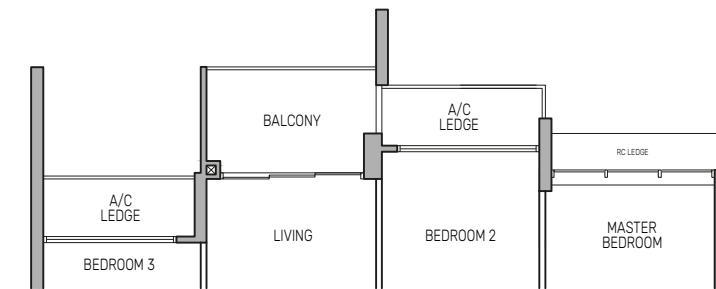
79 sq m / 850 sq ft

BLK 800 : #02-04 to #23-04

APPLICABLE TO #12-04 to #24-04



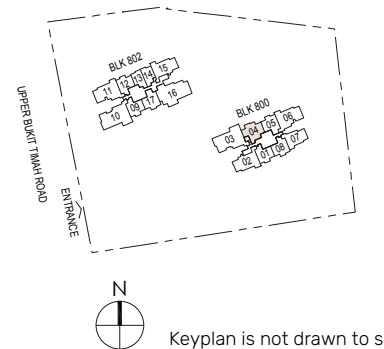
APPLICABLE TO #02-04 to #11-04



Wall not allowed to be hacked or altered
Mirror Image
P.E.S. - Private Enclosed Space
WD - Washer Cum Dryer
WC - Water Closet
HS - Household Shelter
DB/ST - Distribution Board/Storage
RC - Reinforced Concrete
F - Fridge
A/C - Air-Conditioner

0 0.5 1 2 3 5M

Area includes air-conditioner (A/C) ledge, balcony and strata void area where applicable, and excludes among others, the RC - Reinforced Concrete Ledge. The demarcated strata void area is measured mid-wall to mid-wall. The plans are subject to change as may be approved by relevant authorities. All floor plans are approximate measurements only and are subject to final survey. The balcony shall not be enclosed unless with the approved balcony screen, more particularly illustrated under the header "Approved Balcony Screen".



3-BEDROOM

Type C1(d)

95 sq m / 1023 sq ft
(includes 16 sq m of strata void above living and dining with 4.5m ceiling height)

BLK 800 : #24-04

4-BEDROOM

Type D2

141 sq m / 1518 sq ft

BLK 800 : #02-03 to #23-03

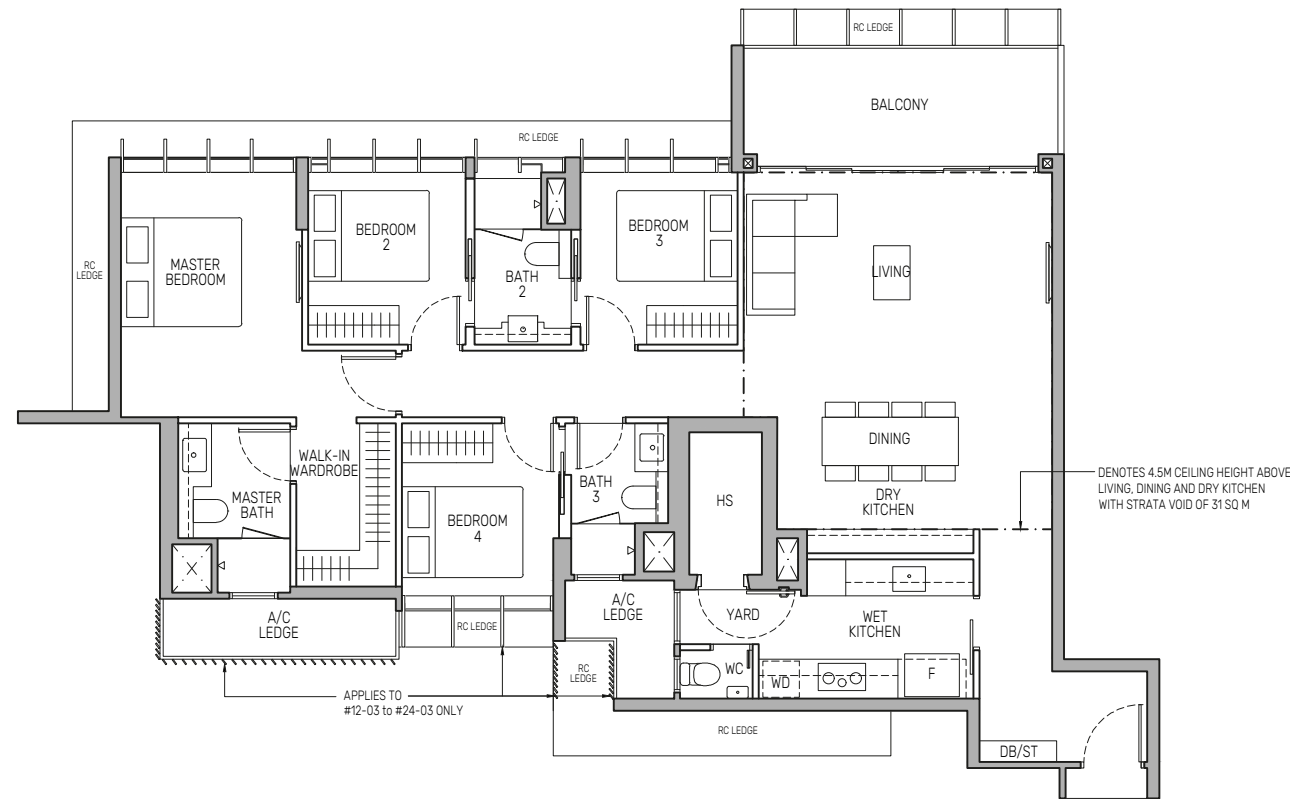
Type D2(d)

172 sq m / 1851 sq ft

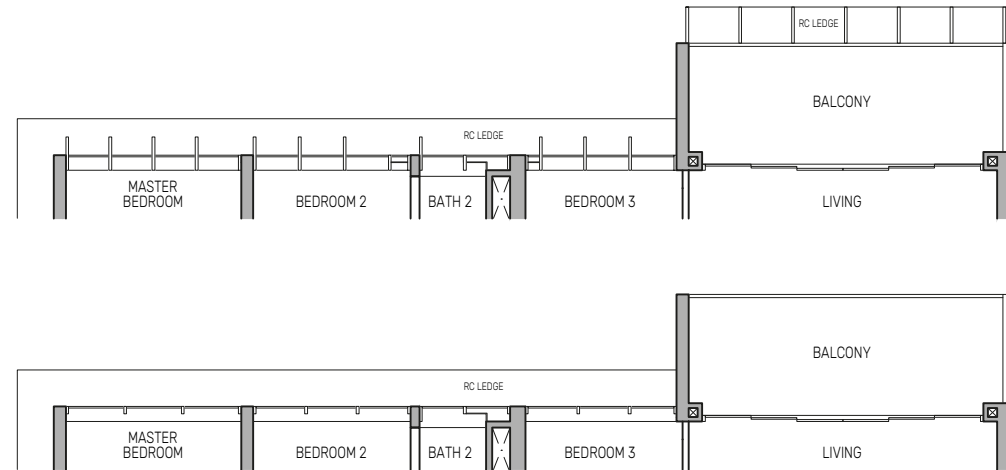
(includes 31 sq m of strata void above living, dining and dry kitchen with 4.5m ceiling height)

BLK 800 : #24-03

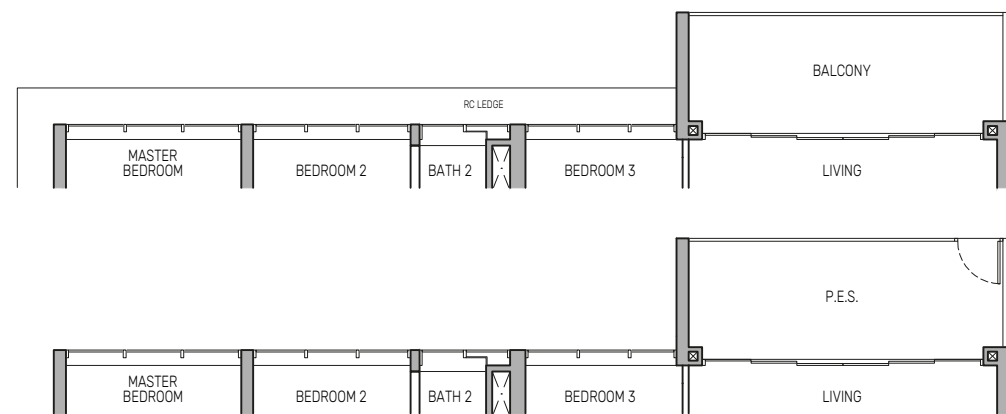
APPLICABLE TO
#12-03
#15-03
#16-03
#19-03
#20-03
#23-03
#24-03



APPLICABLE TO
#13-03
#14-03
#17-03
#18-03
#21-03
#22-03



APPLICABLE TO
#02-03 to #11-03



Type D2(p)

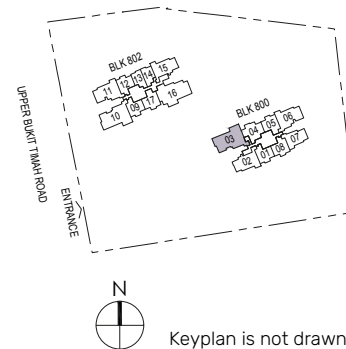
141 sq m / 1518 sq ft

BLK 800 : #01-03

■ Wall not allowed to be hacked or altered
• Mirror Image
P.E.S. - Private Enclosed Space
WC - Water Closet
DB/ST - Distribution Board/Storage
F - Fridge
WD - Washer Cum Dryer
HS - Household Shelter
RC - Reinforced Concrete
A/C - Air-Conditioner

0 0.5 1 2 3 5M

Area includes air-conditioner (A/C) ledge, balcony and strata void area where applicable, and excludes among others, the RC - Reinforced Concrete Ledge. The demarcated strata void area is measured mid-wall to mid-wall. The plans are subject to change as may be approved by relevant authorities. All floor plans are approximate measurements only and are subject to final survey. The balcony shall not be enclosed unless with the approved balcony screen, more particularly illustrated under the header "Approved Balcony Screen".



5-BEDROOM

Type E1(d)

189 sq m / 2034 sq ft

(includes 32 sq m of strata void above living, dining and dry kitchen with 4.5m ceiling height)

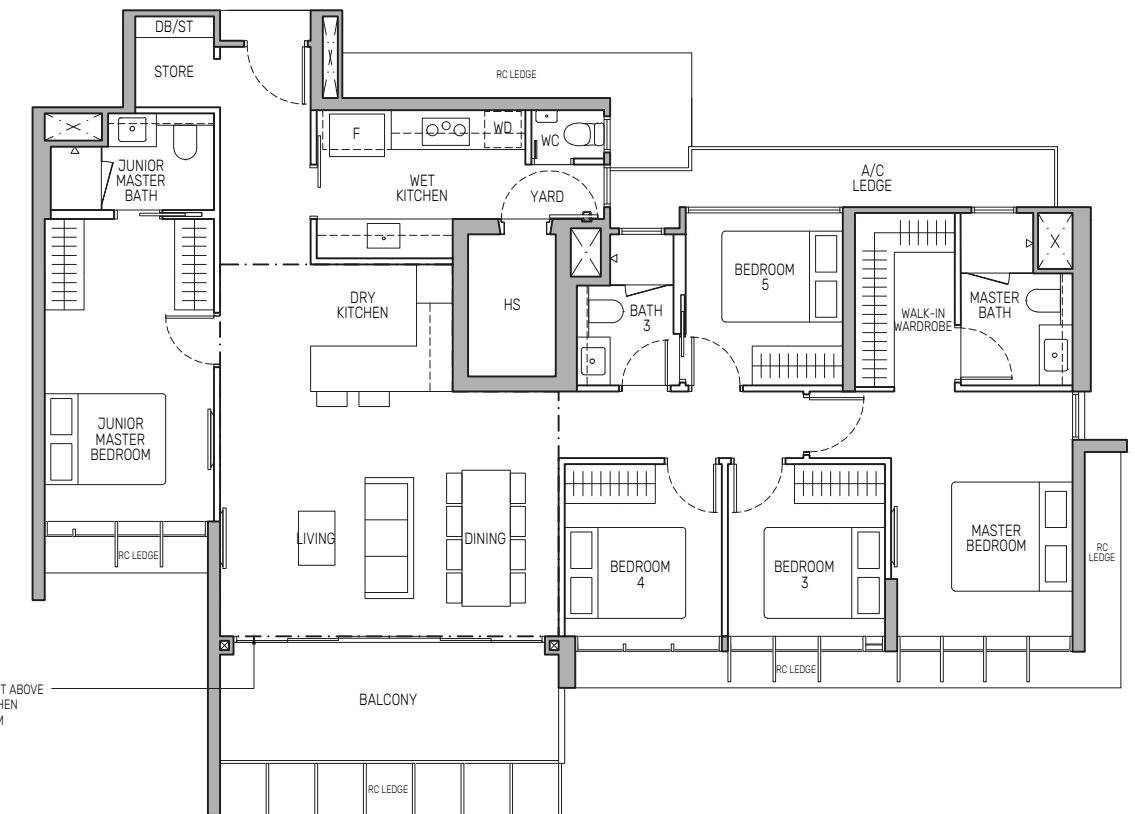
BLK 802 : #24-16

Type E1

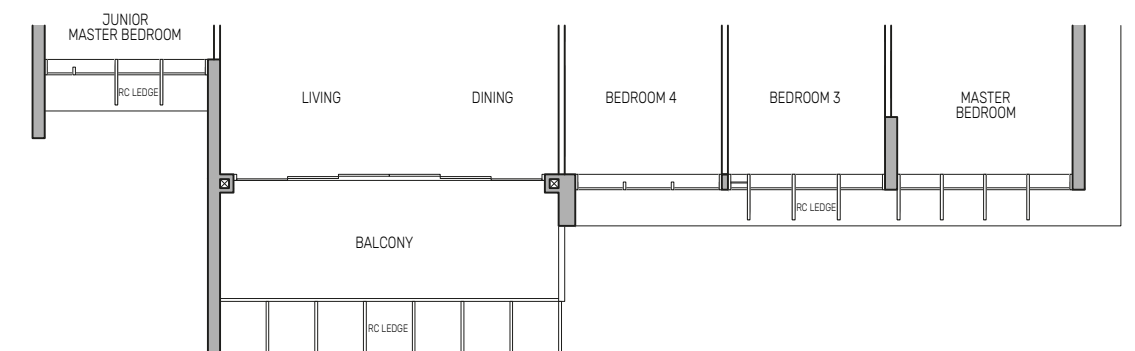
157 sq m / 1690 sq ft

BLK 802 : #02-16 to #23-16

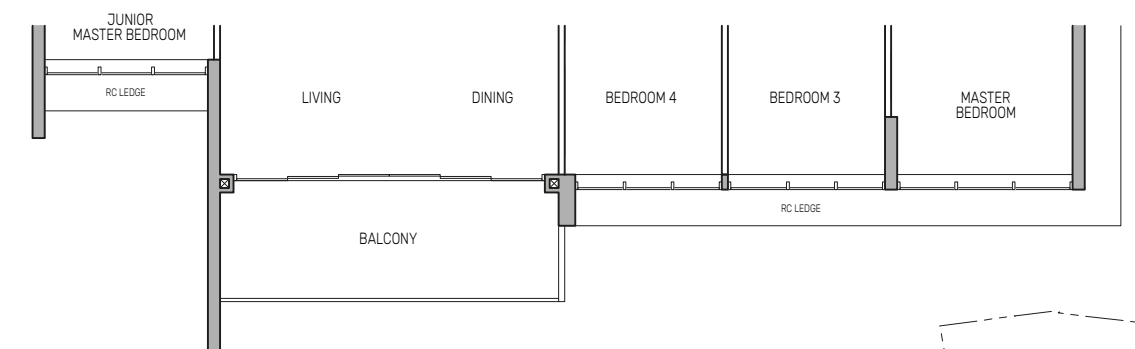
APPLICABLE TO
#12-16
#15-16
#16-16
#19-16
#20-16
#23-16
#24-16



APPLICABLE TO
#13-16
#14-16
#17-16
#18-16
#21-16
#22-16



APPLICABLE TO
#02-16 to #11-16



■ Wall not allowed to be hacked or altered
• Mirror Image
P.E.S. - Private Enclosed Space
WC - Water Closet
DB/ST - Distribution Board/Storage
F - Fridge
WD - Washer Cum Dryer
HS - Household Shelter
RC - Reinforced Concrete
A/C - Air-Conditioner

0 0.5 1 2 3 5M

Area includes air-conditioner (A/C) ledge, balcony and strata void area where applicable, and excludes among others, the RC - Reinforced Concrete Ledge. The demarcated strata void area is measured mid-wall to mid-wall. The plans are subject to change as may be approved by relevant authorities. All floor plans are approximate measurements only and are subject to final survey. The balcony shall not be enclosed unless with the approved balcony screen, more particularly illustrated under the header "Approved Balcony Screen".

